



scan voor vc-card



The Beauty of Photovoltaics

## Kyroof FR System

The fire-resistant inroof solution



### *Logical & simple*

To ensure reliable and safe energy production, the Kyroof Inroof system offers a fire proof solution. With a steel plate as fire separation between the solar modules and the subroof, potential arc faults in the PV System cannot ignite cumbustible insulation materials. This is a welcome addition to a proper installation, control and monitoring, to guarantee that solar panels can be integrated safety into building roofs.

On the fire-seperation, the Kyroof FR System offers a beautifull mounting system that keeps clamps out of sight and gives the roof a uniforme look.

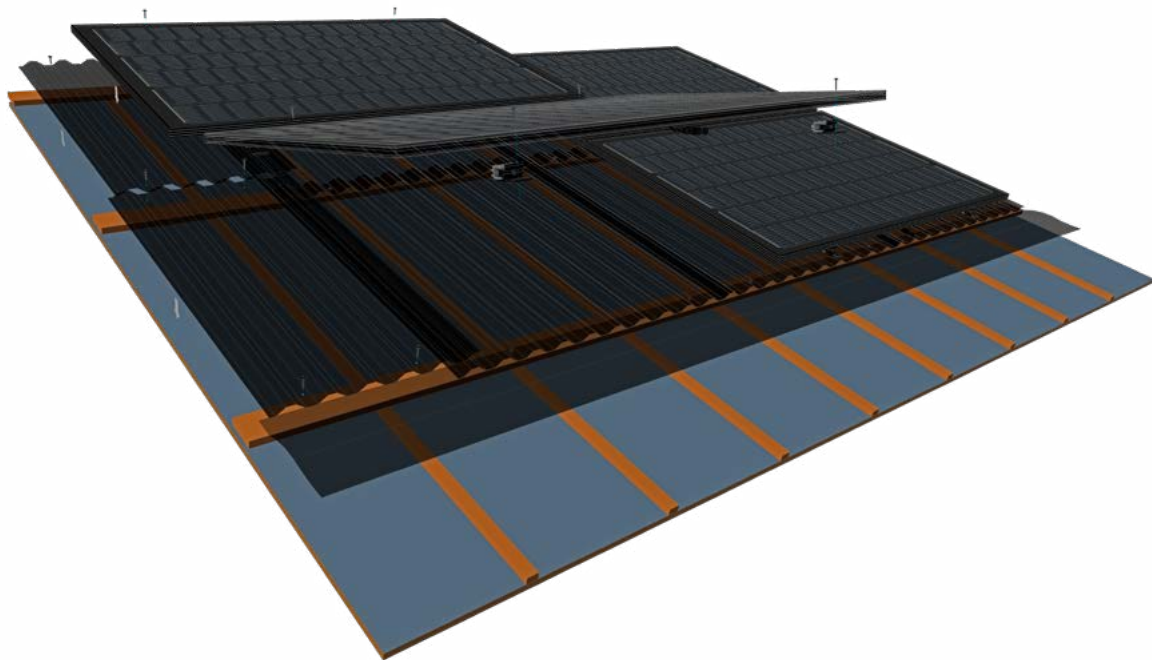
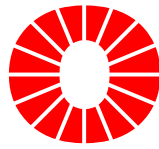


+31 (0)10 223 5953



/robisol

info@robisol.com



## *The composition*

The Kyroof FR System is mounted on steel trapezoidal roof panels with fire class A1. The Kyroof Brackets are mounted under the solar panel in such a way that no mounting clamps are visible on the outside. The brackets have rubber seals and are anchored into the roof with screws or pop rivets. The brackets are adjustable from the outside to enable correct positioning during installation. Because the brackets hook into each other, the solar panel can be temporarily suspended to ease aligning and positioning the system during installation. In full-roof applications, fire-safe fitting panels can be used to fill the roof to skylights and roof ends.



**Freedom of choice**



**Example solar panels**

Output	535Wp	450 Wp	360Wp
Dimensions	2094x1134x30mm	1762x1134x30mm	1555x1145x35mm
High dimension	+30mm	+30mm	+30mm
Width dimension	Flexible	Flexible	Flexible
Preferred design	Full Black	Full Black	Full Black
Cells	132 cell half cut	108 cell half cut	96 cell half cut
Fire class	C (A on request)	C (A on request)	C (A on request)
Product warranty	15 years	15 years	15 years
Performance warranty	30 years linear	30 years linear	30 years linear

**The Solar Panels**

Almost all solar panels can be applied in the Kyroof FR System. On one hand Robisol can provide these, on the other customers and/or installer are free to make their own choice. Because the mounting of the Kyroof brackets on the steel plate is from top to bottom, vertical spacing between the modules is fixed at 30mm. The horizontal spacing is flexible; a spacing of 10 to 20mm generally gives the best results.

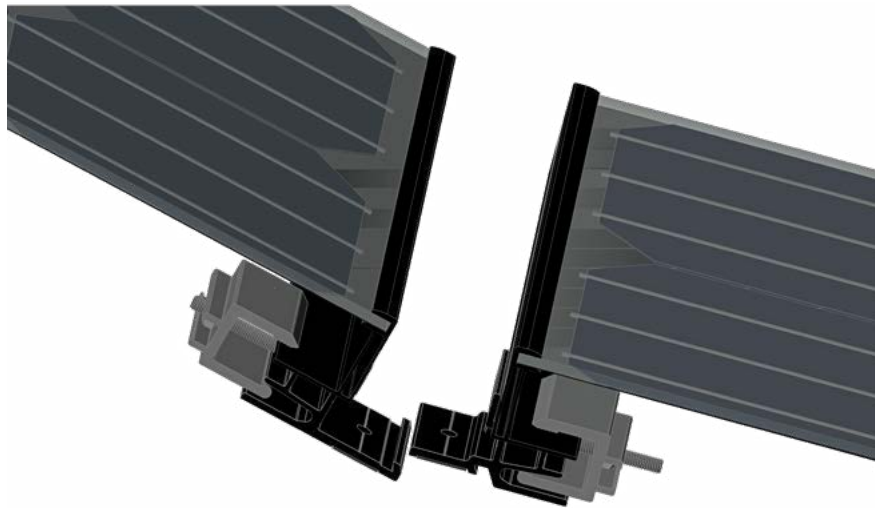
It is recommended to orient the solar panels landscape. This way the Kyroof FR clamps are placed at the correct mounting positions as specified by the manufacturers.



Fire-class A1 Trapezium



Full-black PV finish



## *The benefits*

The Kyroof FR System takes your worries away:

- the steel under roof provides protection against fire and water;
- the Kyroof brackets provide easy installation & high aesthetic value;

The system can be used in between roof tiles as an attractive inroof system. The system can also be used as a full-roof system where the luxurious appearance is emphasized with fire-proof filling panels. As the Kyroof FR System provides a safe, reliable and beautiful application of solar energy, we trust it will fit the needs to make projects more sustainable.