



scan voor vc-card



The Beauty of Photovoltaics

Sunpark canopy system

Solar energy used twice



Because sustainable is allowed to be beautiful

The Robisol Sunpark HL System takes the logical step to integrate solar energy into buildings. This mounting system transforms the solar panel into a construction element with self-supporting roofs and gutters. The high load capacity of the system makes it possible to apply roof sizes of 4.00 metres and spans of 5.00 metres. Together with a steel substructure there are endless possibilities to cover areas for shopping, parking, storage and many others applications.

When using the solar panel as a roof, a fine balance between shading and natural light can be achieved. With a good design, the beauty of photovoltaics is shown without compromises.

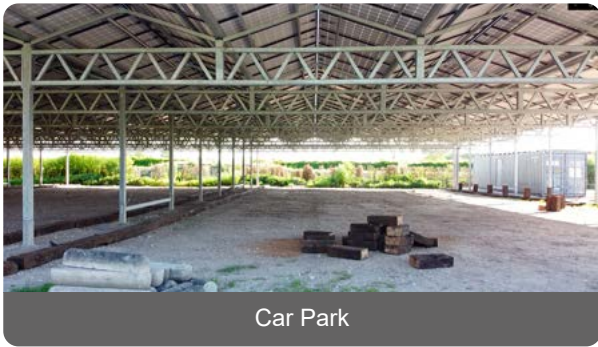
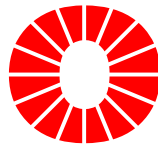


+31 (0)10 223 5953



/robisol

info@robisol.com



The Building Structure

When applying the Sunpark HL System over car parks, the parking spaces and driveways are roofed. For perpendicular parking, several covers are placed on a 16-metre lattice. The centre aisle of 6 metres wide and two parking spaces of 5 metres deep are bridged with one lattice. Columns are placed at the outer corners of the parking spaces to allow cars to manoeuvre freely. With this solution the complete parking area is dry and fully utilised for solar energy.

For canopies, entrances and other roofings, the substructure is often constructed of steel or wood. The Sunpark Canopy System offers flexibility in mounting positions and drain connections and is easy to mount on most substructures. The added value of solar panels as a roof can be used in many buildings.



Freedom of choice



Examples of solar panels

Roof size (gutter c.t.c.)	4.00m	3.20m	3.20m
Power	535Wp	450 Wp	400Wp
Light transmission	6%	6%	20%
Composition	132 cell glass-glass	108 cell glass-glass	96 cell glass-glass
Size	2094x1134x30mm	1722x1134x30mm	1722x1134x30mm
Fire class	C (A on request)	C (A on request)	C (A on request)
Wind load	2400Pa	2400Pa	2400Pa
Snow load	5400Pa	5400Pa	5400Pa
Product warranty	15 year	15 year	15 year
Output warranty	30 year linear	30 year linear	30 year linear

The PV Modules

The Sunpark System is suitable for almost all types of solar panels. In cooperation with investors or large scale installers, there is often a desire to buy 'own' panels so that the efficiency of the PV System can be guaranteed. With relatively standard solar panels, a friendly interior space is created, because no solar panel is 100% light proof.

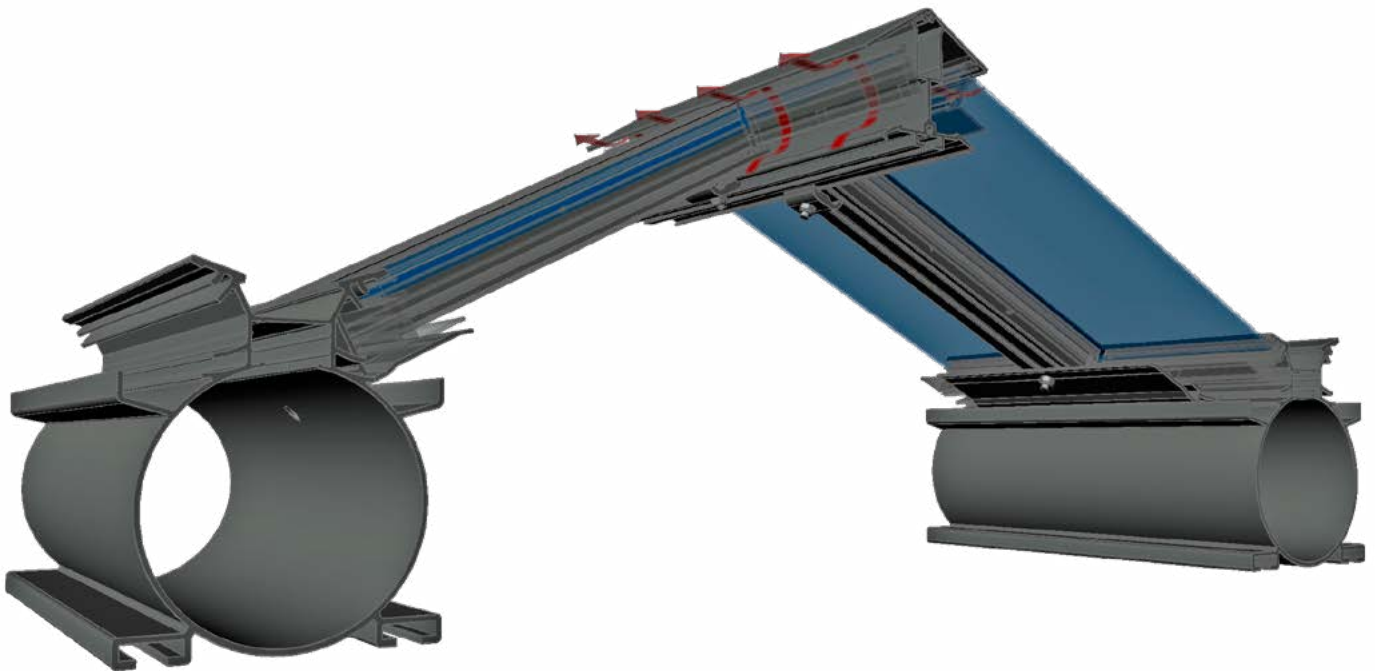
Additionally, it may be interesting to choose for extra light transmission. With a solar roof, this can be achieved by using solar panels with slightly more space between the cells. This creates a beautiful play of light and a pleasant living space under the roof.



Building integration



Extra light transmission



The practical benefits

The Sunpark canopy system adds value to your building, makes it more sustainable and pays for itself by producing green energy.

The use of solar panels as a roofing structure offers advantages in:

- High **Energy production** per square metre;
- A **Beautiful** play of light under the canopy;
- A **watertight** roof with gutters and drainage;
- A **neat construction** with minimal material consumption;
- Integrated **electrical management** for maximum efficiency.